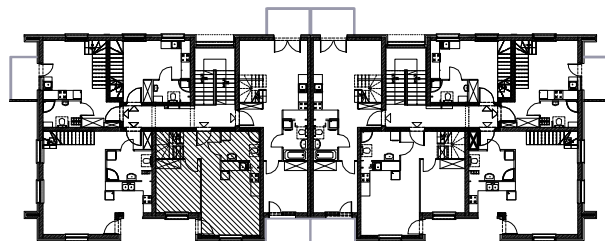
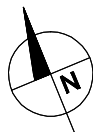


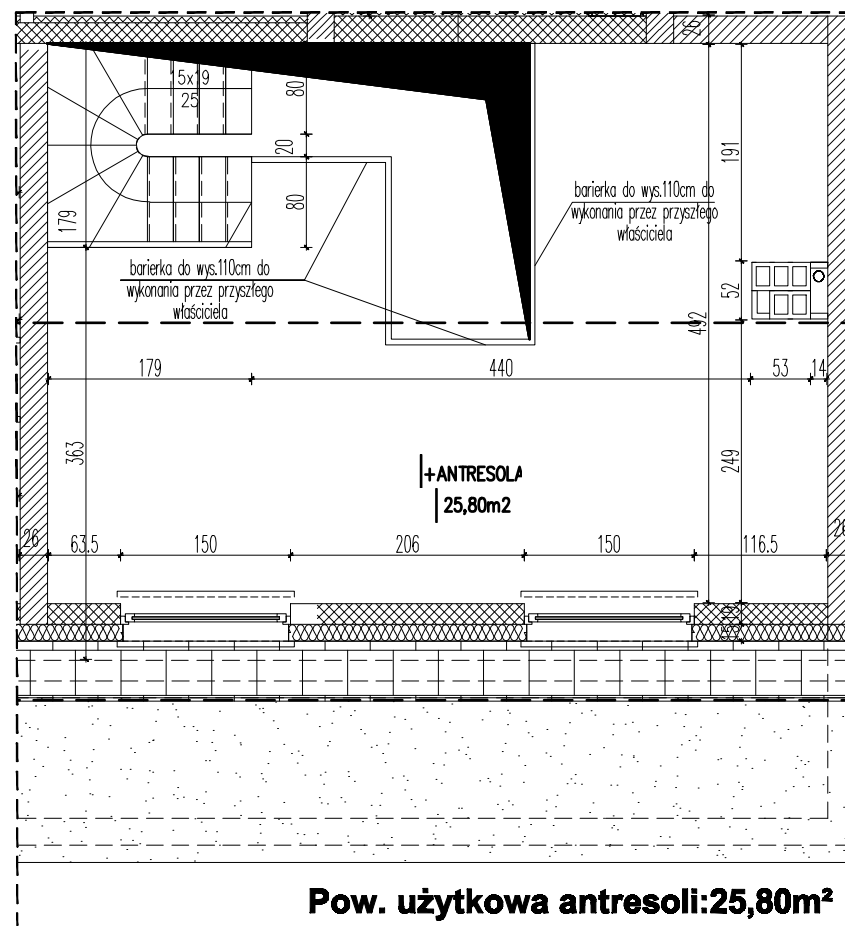
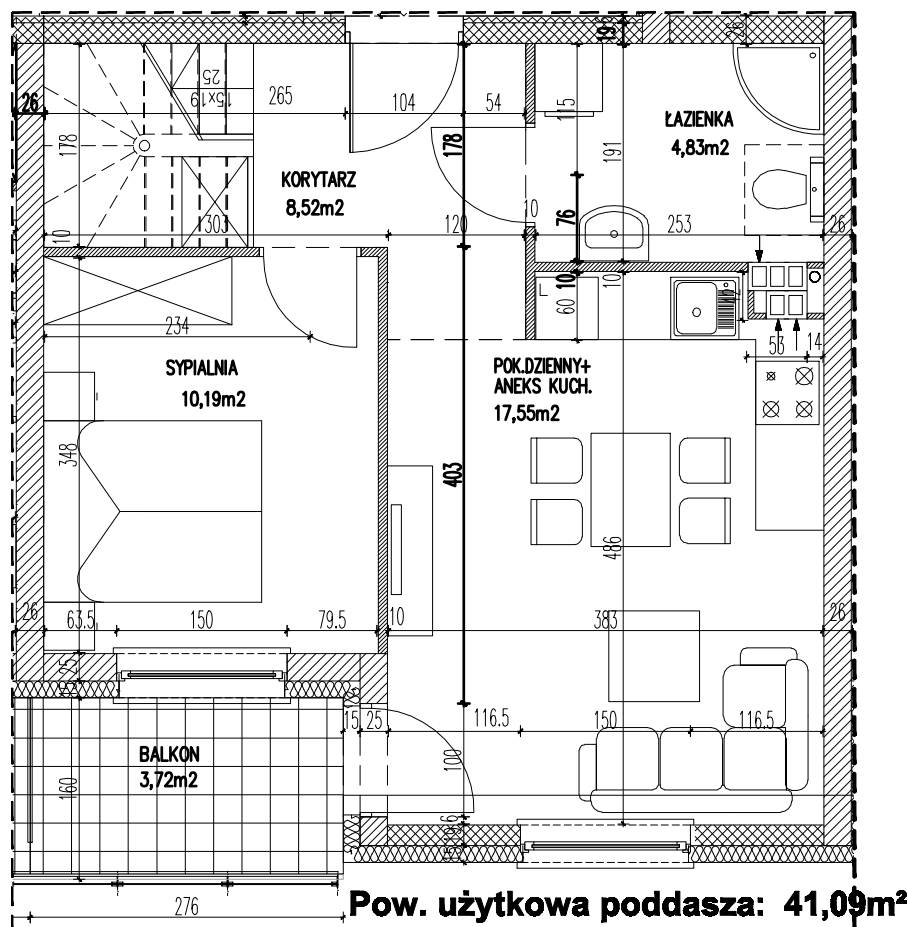
**Osiedle:
"Aleja
lawendowa"**



**Pow. użytkowa:
Pow. balkonu:
Lokal 3-pokojowy**

**66,89m²
4,27m²**

**opty
development
dom**



skala rysunku: 0 1m 4m

Opty - Dom Development Sp. z o.o.
55-093 Kielczów ul. Wilczycka 14
www.alejlawendowa.pl

kontakt tel:
576 952 744

Adres mieszkania: ul. Lawendowa
Bud. B, kl. nr 1; piętro: PIĘTRO 2 + ANTRESOLA

Lokal nr M4