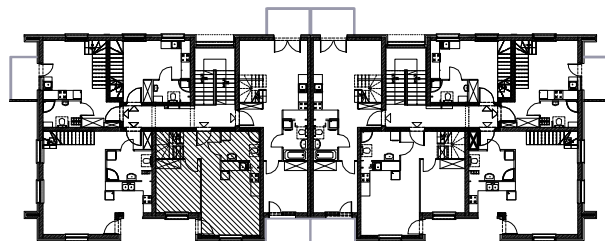
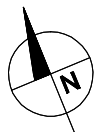


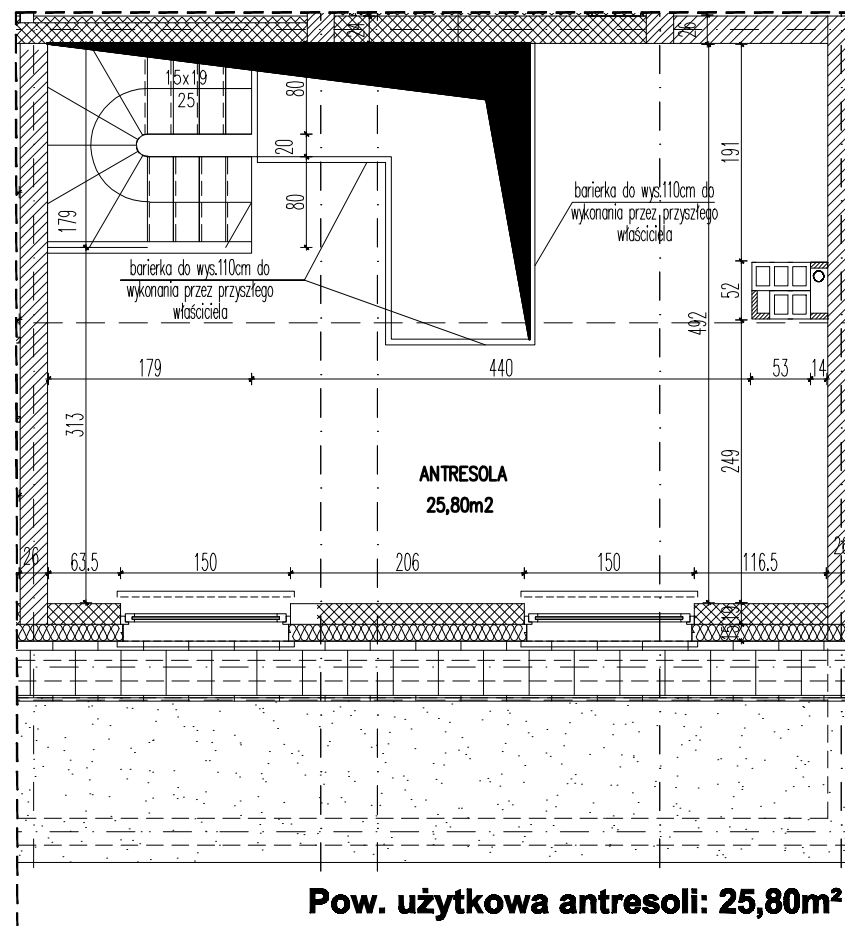
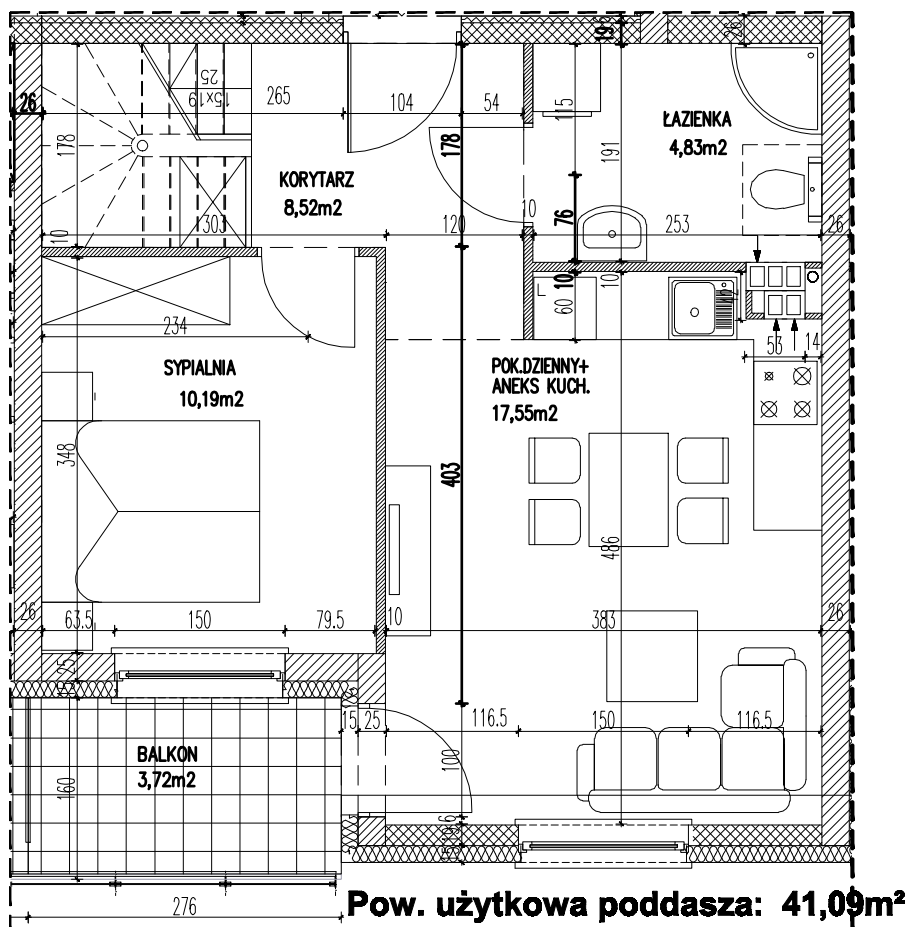
**Osiedle:  
"Aleja  
lawendowa"**



**Pow. użytkowa:  
Pow. balkonu:  
Lokal 3-pokojowy**

**66,89m<sup>2</sup>  
4,27m<sup>2</sup>**

**opty  
development  
dom**



skala rysunku: 0 1m 4m

**Opty - Dom Development Sp. z o.o.**  
55-093 Kielczów ul. Wilczycka 14  
www.alejlawendowa.pl

kontakt tel:  
576 952 744

Adres mieszkania: ul. Lawendowa  
Bud. A, kl. nr 1; piętro: PIĘTRO 2 + ANTRESOLA

Lokal nr M4