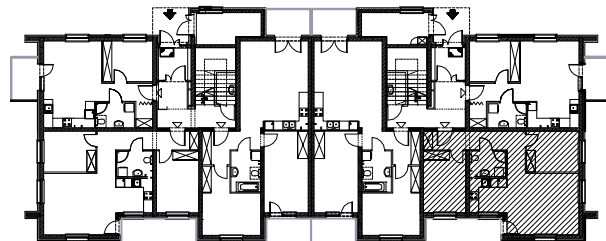
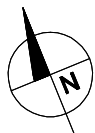
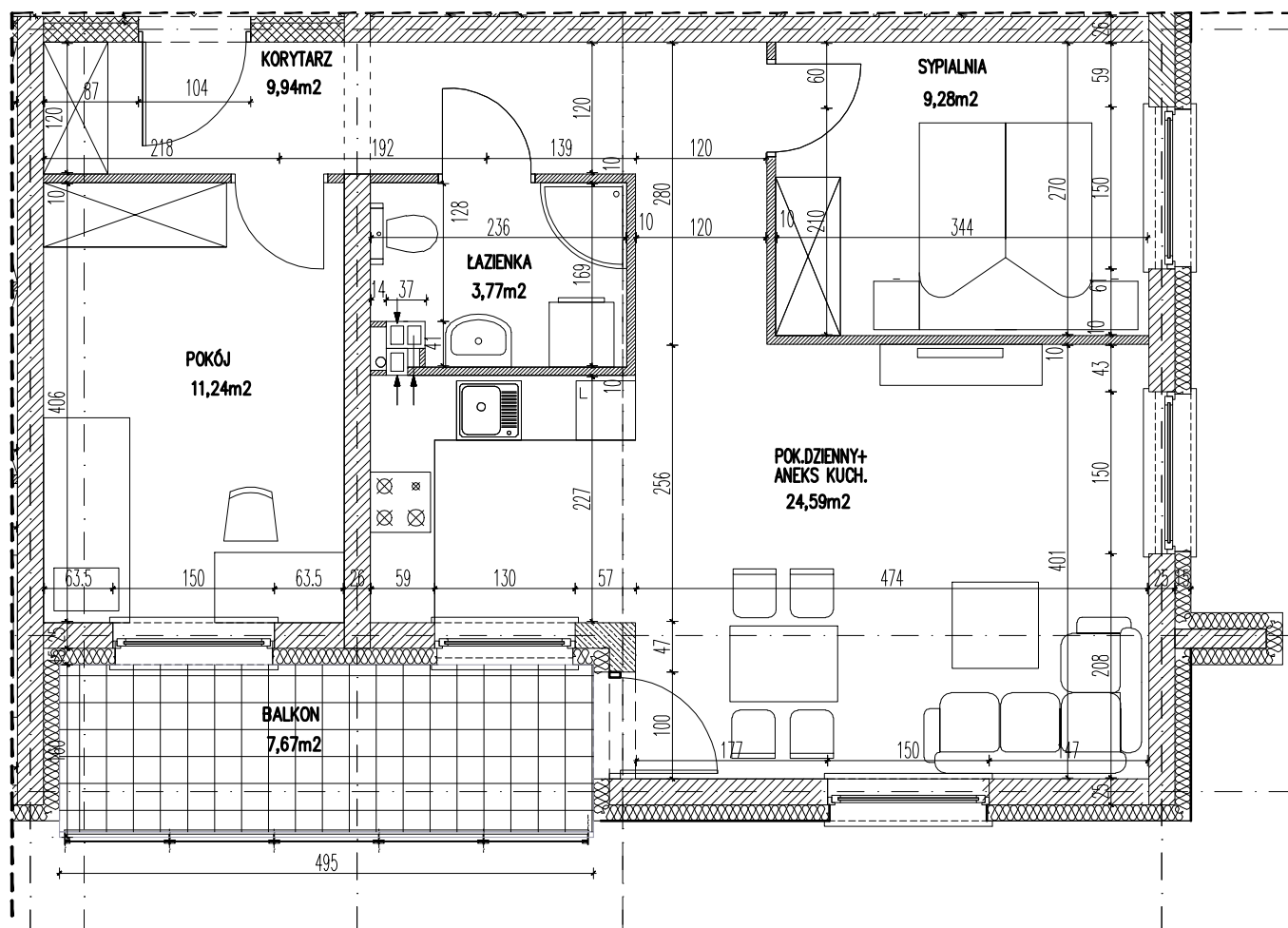


Osiedle:  
**"Aleja  
lawendowa"**



**Pow. użytkowa: 58,82m<sup>2</sup>**  
**Pow. balkonu: 7,67m<sup>2</sup>**  
**Lokal 3-pokojowy**

**opty**  
development  
**dom**



skala rysunku: 0 1m 4m

**Opty - Dom Development Sp. z o.o.**  
55-093 Kielczów ul. Wilczycka 14  
[www.alejlawendowa.pl](http://www.alejlawendowa.pl)

kontakt tel:  
576 952 744

Adres mieszkania: ul. Lawendowa  
Bud. A, kl. nr 2; piętro: PARTER

Lokal nr M2